



BAUMA Brush Mulchers

Jan 1, 2017 FOB Dealer

Prices reduced! Free delivery to local dealer.



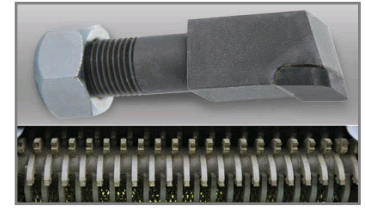
MS548 for Skid Steers



MX548 for Excavators



MP348 3-Point



500-Series Carbide Teeth

BRUSH MULCHERS, Skid Steer

	Stock No	Weight	List
MS248 48" Cut, 62" path, for 12-20 gpm, 30 flail teeth, .5"-1" capacity, skid steer mount	MS248	750#	\$6,248
MS348 48" Cut, 62" path, for 12-20 gpm, 60 carbide round teeth, .75"-2" capacity, skid steer mount	MS348	950#	\$9,308
MS548 48" Cut, 62" path, for 12-20 gpm, 104 carbide V-Notch teeth, .75"-2" capacity, skid steer mnt	MS548A450	1490#	\$13,430
MS548, as above, for 12-26 gpm, 1.0"-2.75" capacity	MS548B550		\$14,824
MS548, as above, for 8-16 gpm, 1.25"-3.5" capacity	MS548C508		\$15,895
MS548, as above, for 12-27 gpm, 1.5"-4.5" capacity	MS548C510		\$16,065
MS548, as above, for 18-35 gpm, 1.25"-5" capacity	MS548C530		\$16,745
MS548, as above, for 25-40 gpm, 2.75"-5.5" capacity	MS548C540		\$16,958
MS560 60" Cut, 75" path, for 8-16 gpm, 126 carbide teeth, 1.25"-3.5" capacity, skid steer mount	MS560C508	2115#	\$18,318
MS560, as above, for 12-27 gpm, 1.5"-4.5" capacity	MS560C510		\$18,488
MS560, as above, for 18-35 gpm, 1.25"-5" capacity	MS560C530		\$19,168
MS560, as above, for 25-40 gpm, 2.75"-5.5" capacity	MS560C540		\$19,380
MS560, as above, for 28-45 gpm, 3.5"-6.75" capacity	MS560C550		\$19,508
iMS760 60" Cut, 75" path, for 18-35 gpm, 78 carbide cutters, 1.6"-5.9" capacity, skid steer mount	iMS760C730	3350#	\$27,285
iMS760, as above, for 25-40 gpm, 3.6"-6.8" capacity	iMS760C740		\$27,498
iMS760, as above, for 28-45 gpm, 4.6"-8.5" capacity	iMS760C750		\$27,625
iMS760, as above, for 38-56 gpm, 5.5"-9.8" capacity	iMS760C770		\$28,093

BRUSH MULCHERS, Mini-Excavator & Excavator

	Stock No	Weight	List
MX230, 30" Cut, 40" path, 12-20 gpm, 18 flail teeth, .5"-1" capacity, ADD mnt & couplers	MX230		\$4,994
MX330, 30" Cut, 40" path, 12-20 gpm, 36 carbide round teeth, .75"-2" capacity, ADD mnt & couplers	MX330	750#	\$7,778
MX530, 30" Cut, 40" path, 12-20 gpm, 64 V-Notch teeth, .75"-2" capacity, ADD mount & couplers	MX530A450	1036#	\$10,795
MX530, as above, for 28-45 gpm, 3.5"-6.75" capacity	MX530C550		\$14,450
MX548 48" Cut, 62" path, for 18-35 gpm, 104 V-Notch teeth, 1.25"-5" capacity, ADD mount & couplers	MX548C530	1670#	\$16,915
MX548, as above, for 45-75 gpm, 5"-11" capacity	MX548C590		\$18,785
iMX748 48" Cut, 65" path, for 25-40 gpm, 78 carbide cutters, 3.6"-6.8" capacity, ADD mnt & couplers	MX748C740	3200#	\$23,333
iMX748, as above, for 45-75 gpm, 6.5"-13" capacity	MX748C790		\$24,990
Other mulcher versions, B550, C510, C550, C570 motors to match gpm			Call
Blank plate for excavator mount, for MX330/MX530, ADD mount locally or call for custom mount	D001161	48#	\$81
Blank plate for excavator mount, for MX548/MX748, ADD mount locally or call for custom mount	D001419	90#	\$128

BRUSH MULCHERS, Tractor 3-Point

	Stock No	Weight	List
MP248 48" Cut, Cat I 3-point hitch, 540 PTO, 30 flail teeth, .5"-2" capacity, for 25-45 hp	MP248		Call
MP348 48" Cut, Cat I 3-point hitch, 540 PTO, 60 carbide round teeth, 1"-4" capacity, for 25-45 hp	MP348	1050#	\$10,026
MP360 60" Cut, Cat I 3-point hitch, 540 PTO, 74 carbide round teeth, 1"-4" capacity, for 30-50 hp	MP360	1200#	\$11,390
MP560 60" Cut, Cat II 3-point hitch, 540 PTO, 126 carbide V-Notch teeth, 1"-6" capacity, 45-68hp	MP560	2145#	\$16,958
MP572 72" Cut, Cat II 3-point hitch, 1000 PTO, 1"-6" capacity, for 50-120 hp	MP572	2500#	\$22,270
iMP772 72" Cut, Cat II 3-point hitch, 1000 PTO, 4"-12" capacity, for 90-165 hp	iMP772	4558#	\$33,533

NOTE: Maximum gpm & hp shown is the absolute limit. Higher gpm or hp VOIDS THE WARRANTY.

FREIGHT, FOB Local Dealer

FACTORY WARRANTY: 1 Year on parts and preapproved local labor; with limitations.

All orders are also subject to the dealer Sales & Security Agreement, our latest Discounts and Terms, and credit approval.



BAUMA Grinder, Tree Spade

Jan 1, 2017 FOB Dealer

Prices reduced! Free delivery to local dealer.



3P24 Stump Grinder



X4S Tree Scoop



SS330 Tree Spade

STUMP GRINDERS

	Stock No	Weight	List
1P24 3-Point, Cat I, 540 PTO, 24" rotor, straight pull, for 20-45 hp hydrostatic tractor	1P24	350#	\$2,801
3P24 3-Point, Cat I-II, 540 PTO, 24" rotor @810 rpm, 36 teeth, hydr lift & swing, for 30-50 hp	3P24	650#	\$5,763
3P34 3-Point, Cat II, 540 PTO, 34" rotor @810 rpm, 54 teeth, hydr lift & swing, for 50-80 hp	3P34	1230#	\$7,268
3P40 3-Point, Cat II, 540 PTO, 40" rotor @810 rpm, hydr lift & swing, for 60-120 hp	3P40	1280#	\$8,628
S14 Mini Skid Steer, 24" rotor @700 rpm, 36 teeth, straight pull, for 8-14 gpm, ADD mount	S14S250	450#	\$3,128
S14 Mini Skid Steer, as above, for 12-20 gpm, ADD mount	S14S450	450#	\$3,392
S18 Skid Steer, 24" rotor @700 rpm, 36 teeth, straight pull, for 12-20 gpm, ADD mount	S18S450	642#	\$4,412
S18 , as above, for 15-25 gpm, ADD mount	S18S550	670#	\$5,729
S18 , as above, for 25-40 gpm, ADD mount	S18S650	690#	\$6,494
S24 Skid Steer, 24" rotor @700 rpm, 36 teeth, hydr swing w/diverter, for 20-25 gpm, with mount	S24S445	852#	\$6,588
S24 Skid Steer, as above, for 20-30 gpm, with mount	S24S545	860#	\$7,905
S28 Skid Steer, 24" rotor @800 rpm, 36 teeth, hydr swing w/diverter, for 30-45 gpm, with mount	S28S645	995#	\$8,968
Mount, for universal mini skid steer, for S14/S18	D001126	60#	\$128
Mount, for Bobcat mini skid steer, 35.5" wide, for S14/S18	D001943	95#	\$234
Mount, for universal skid steer, for S14/S18	D001127	100#	\$213
Mount, for mini-excavator			Call
Hydraulic valve kit for 3P24, to use one remote, improves feathering, at factory	S1050	255#	\$723
Replacement tooth, 7/8" carbide tip, 5/8" threaded shank, package of 24 (\$9.91 each in bulk)	D001627		\$224
Replacement lock nut, 5/8" fine thread, EACH	D001773		\$2

TREE SPADES

	Stock No	Weight	List
X4S Tree Scoop, for 1.0"-1.5" trunk, 28" root ball, 43" long, sharp tip, skid steer mount	X4S	225#	\$1,271
24" Ball, Skid Steer Mount, 3 fixed spades, semi-truncated, for 1.5"-2.0" trunk, for 40-80 hp	ST324	990#	\$6,456
30" Ball, Skid Steer Mount, 3 fixed spades, semi-truncated, for 2.5"-3.0" trunk, for 60-100 hp	ST330	1380#	\$7,642
30" Ball, Skid Steer Mount, as above but with swing-open front frame, best for bushy evergreens	SS330	1450#	\$8,976
40" Ball, Skid Steer Mount, 4 spades w/swing, full-truncated, 3.0"-4.0" trunk, for 90-100 hp	ST440	1850#	\$12,070
50" Ball, Skid Steer Mount, 4 spades w/swing, full-truncated, 4.0"-5.0" trunk, for 8600# lift	ST650	3025#	\$21,973
40" Ball, Trailed, 20hp engine, 4 spades w/swing, full-truncated, 3.0"-4.0" trunk, w/hydr power pack	TR440	4180#	\$33,601
Front loader mount, 3-point mount and trailer tree spades			Call
Stabilizers (outriggers), cylinders, weld-on flange, ADD hoses & valve as needed	D001542		\$1,233
Control cable for DR440, longer or shorter than 15', PER FOOT			\$87

FREIGHT, FOB Local Dealer

FACTORY WARRANTY: 1 Year on parts and preapproved local labor; with limitations.

All orders are also subject to the dealer Sales & Security Agreement, our latest Discounts and Terms, and credit approval.



BAUMA Rotary Mowers, Trenchers

Jan 1, 2016 FOB Dealer

Prices reduced! Free delivery to local dealer.



CF560

CF572

CF360

CF372



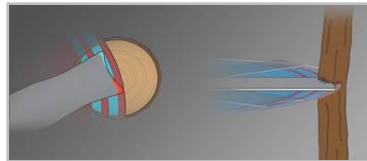
TN548 Trencher, Planetary Drive

BRUSH CUTTERS, Skid Steer, Square Front Deck

60" Cut, 2 blades, 12-20 gpm
60" Cut, 2 blades, 12-24 gpm
60" Cut, 2 blades, 12-24 gpm

72" Cut, 2 blades, 12-20 gpm
72" Cut, 2 blades, 12-24 gpm
72" Cut, 2 blades, 12-24 gpm

For excavator mounted models, ADD



Stock No	Weight	List
CF360M450	1342#	\$6,165
CF360M550	1342#	\$7,290
CF360M650	1342#	\$8,100
CF372M450	1390#	\$7,335
CF372M550	1390#	\$8,460
CF372M650	1390#	\$9,270
CX....		\$90

BRUSH CUTTERS, Skid Steer, Open Front Deck for Felling

60" Cut, 4 blades, 12-20 gpm
60" Cut, 4 blades, 12-24 gpm
60" Cut, 4 blades, 12-24 gpm

72" Cut, 4 blades, 12-20 gpm
72" Cut, 4 blades, 12-24 gpm
72" Cut, 4 blades, 12-24 gpm

Stock No	Weight	List
CF560M450	1540#	\$7,155
CF560M550	1540#	\$8,280
CF560M650	1540#	\$9,090
CF572M450	1570#	\$7,785
CF572M550	1570#	\$8,910
CF572M650	1570#	\$9,720

BRUSH CUTTERS, 3-Point PTO, Open Rear Deck for Felling

60" Cut, 4" capacity, 4 blades, up to 70 hp
60" Cut, 4" capacity, 4 blades, 12-24 gpm, up to 80 hp



Stock No	Weight	List
CP560	1600#	\$5,625
CP572	1800#	\$6,255

TRENCHERS, Mini Skid Steer

TN236 Trencher, 36" depth, 4" width cup dirt tooth chain, planetary drive, hoses, 8-20 gpm
TN236 Trencher, 36" depth, 6" width cup dirt tooth chain, planetary drive, hoses, 8-20 gpm

Stock No	Weight	List
TN236-4	810#	\$5,688
TN236-6	810#	\$5,747

TRENCHERS, Skid Steer

TN336 Trencher, 36" depth, 4" width cup dirt tooth chain, planetary drive, hoses, 8-20 gpm
TN336 Trencher, 36" depth, 6" width cup dirt tooth chain, planetary drive, hoses, 8-20 gpm
TN548 Trencher, 48" depth, 6" width cup dirt tooth chain, planetary drive, hoses, 12-25 gpm
TN560 Trencher, 60" depth, 6" width cup dirt tooth chain, planetary drive, hoses, 12-25 gpm
TN760 Trencher, 60" depth, 6" width cup dirt tooth chain, planetary drive, hoses, 20-42 gpm

Stock No	Weight	List
TN336-4	850#	\$6,048
TN336-6	850#	\$6,107
TN548-6	1250#	\$6,750
TN560-6	1375#	\$7,785
TN760-6	1675#	\$9,225

Trencher with 8" or 10" width chain, or with rock teeth

Call

NOTE: Maximum gpm & hp shown is the absolute limit. Higher gpm or hp VOIDS THE WARRANTY.

FREIGHT, FOB Local Dealer

FACTORY WARRANTY: 1 Year on parts and preapproved local labor; with limitations.

All orders are also subject to the dealer Sales & Security Agreement, our latest Discounts and Terms, and credit approval.



BAUMA

PTO Generators

Jan 1, 2016 FOB Dealer

Free delivery to dealer.

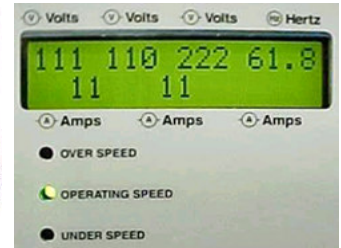
DEDUCT 8% for orders with 8-week lead time.



TX-Series Generator



QC-Series Generator



QC-Series Display

All BaumaLight generators include trailer, PTO shaft, 10-foot cord with Anderson connections.

SIZING is very important. It cannot be calculated the same for TX and QC Series. See the brochure, online tables, or call.

TX SERIES

Brushless, copper windings, 3600 rpm, +- 6% regulation. For intermittent use. Not recommended for starting big motors.

	Stock No	Weight	List
7 Kw, 14 Kw surge, 120/240 volt 1ph, 540 PTO only, needs 11hp at full load	TX7	300#	\$3,218
12 Kw, 24 Kw surge, 120/240 volt 1ph, 540 PTO only, 21hp	TX12	350#	\$3,555
18.5 Kw, 37 Kw surge, 120/240 volt 1ph, 540 PTO only, 34hp	TX18	430#	\$4,833
25 Kw, 50 Kw surge, 120/240 volt 1ph, 540 PTO only, 42hp	TX25	490#	\$5,355
31 Kw, 62 Kw surge, 120/240 volt 1ph, 540 PTO only, 54hp	TX31	520#	\$5,922
3-Point hitch deck for TX7 - TX12	D001371		\$965
3-Point hitch deck for TX18 - TX31	D001378		\$1,316

QC SERIES

Low speed 1800 rpm, Display Master console, +-1% regulation. Designed for continuous operation, big motors.

	Stock No	Weight	List
12 Kw, 25 Kw surge, 120/240 volt 1 ph, 540 PTO only, needs 21hp at full load	QC12	592#	\$6,296
19 Kw, 35 Kw surge, 120/240 volt 1 ph, 540 PTO, 34hp	QC19	678#	\$6,831
30 Kw, 85 Kw surge, 120/240 volt 1 ph, 540 PTO, 49hp	QC30	777#	\$7,785
45 Kw, 120 Kw surge, 120/240 volt 1 ph, 540 PTO, 75hp	QC45	973#	\$9,495
55 Kw, 150 Kw surge, 120/240 volt 1 ph, 540/1000 PTO, 89hp	QC55	1037#	\$10,665
65 Kw, 180 Kw surge, 120/240 volt 1 ph, 540/1000 PTO, 102hp	QC65	1084#	\$12,326
80 Kw, 225 Kw surge, 120/240 volt 1 ph, 1000 PTO only, 122hp	QC80	1335#	\$14,265
100 Kw, 300 Kw surge, 120/240 volt 1 ph, 1000 PTO only, 153hp	QC100	1485#	\$15,296
27 Kw, 130 Kw surge, 377/600 volt 3 ph, 540/1000 PTO, 50hp	QC27-6	780#	\$8,190
50 Kw, 130 Kw surge, 377/600 volt 3 ph, 540/1000 PTO, 80hp	QC50-6	1010#	\$9,855
75 Kw, 200 Kw surge, 377/600 volt 3 ph, 1000 PTO only, 110hp	QC75-6	1175#	\$12,195
100 Kw, 300 Kw surge, 377/600 volt 3 ph, 1000 PTO only, 153hp	QC100-6	1474#	\$15,885

QC SERIES, RECONNECTABLE

	Stock No	Weight	List
30 Kw, 85 Kw surge, 1ph or 3ph, specify voltage, 540 PTO only, needs 49hp at full load	QC30-x	779#	\$8,865
45 Kw, 120 Kw surge, 1ph or 3ph, specify voltage, 540/1000 PTO, 75hp	QC45-x	957#	\$10,755
68 Kw, 190 Kw surge, 1ph or 3ph, specify voltage, 540/1000 PTO, 105hp	QC68-x	1094#	\$12,780
105 Kw, 315 Kw surge, 1ph or 3ph, specify voltage, 1000 PTO only, 155hp	QC105-x	1474#	\$15,525

x denotes voltage. Example: QC30-2 is 208v, -3 is 240v, -4 is 480v.

3-Point hitch deck for any QC12 - QC30	D001378		\$1,316
3-Point hitch deck for any QC55 - QC105	D001434		\$1,746

FREIGHT, FOB Local Dealer
 STOCK ORDERS: Extra 8% discount for orders with 8-9 week lead time.
 FACTORY WARRANTY: 1 Year on parts and preapproved local labor; with limitations.
 All orders are also subject to the dealer Sales & Security Agreement, our latest Discounts and Terms, and credit approval.